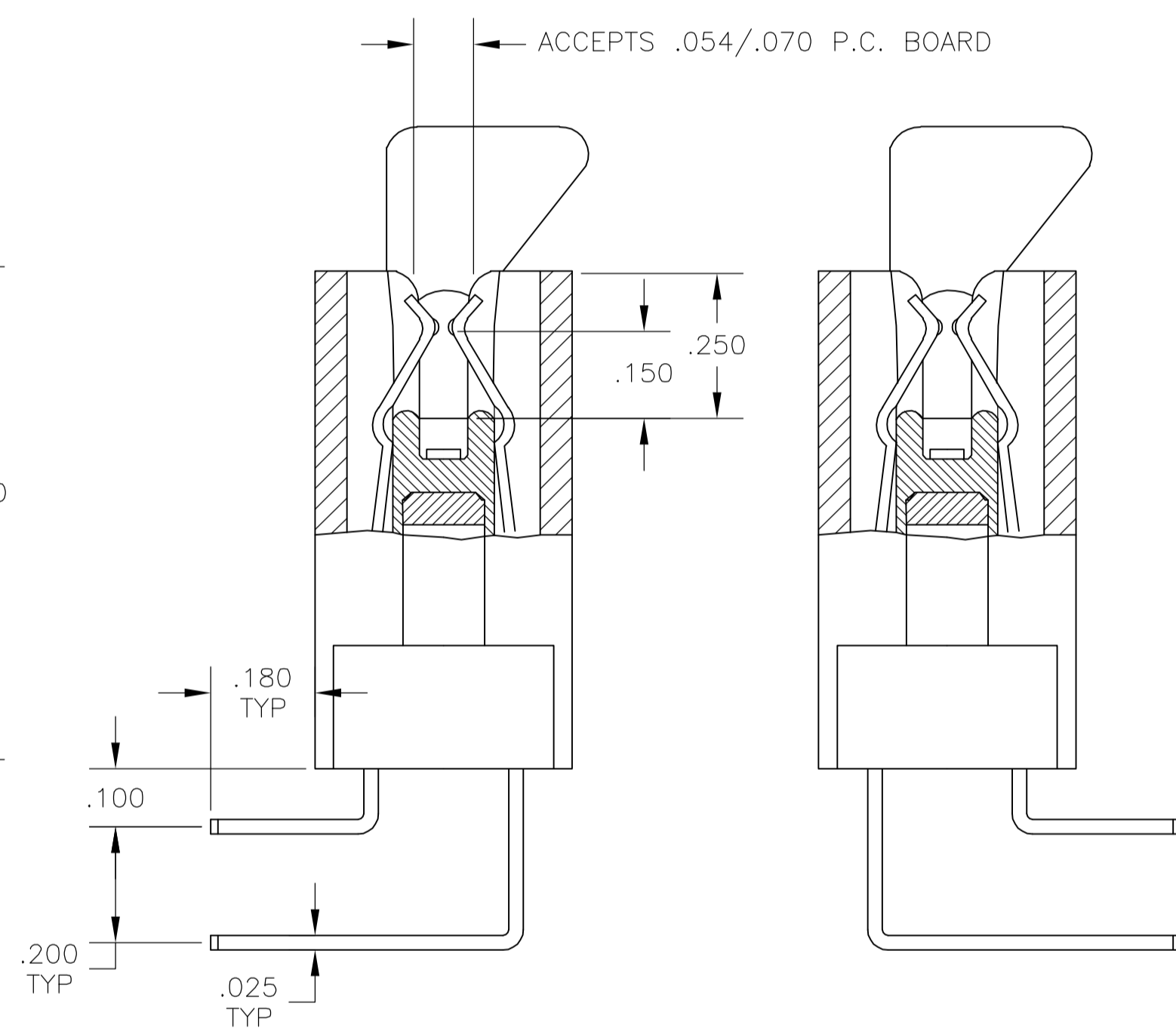
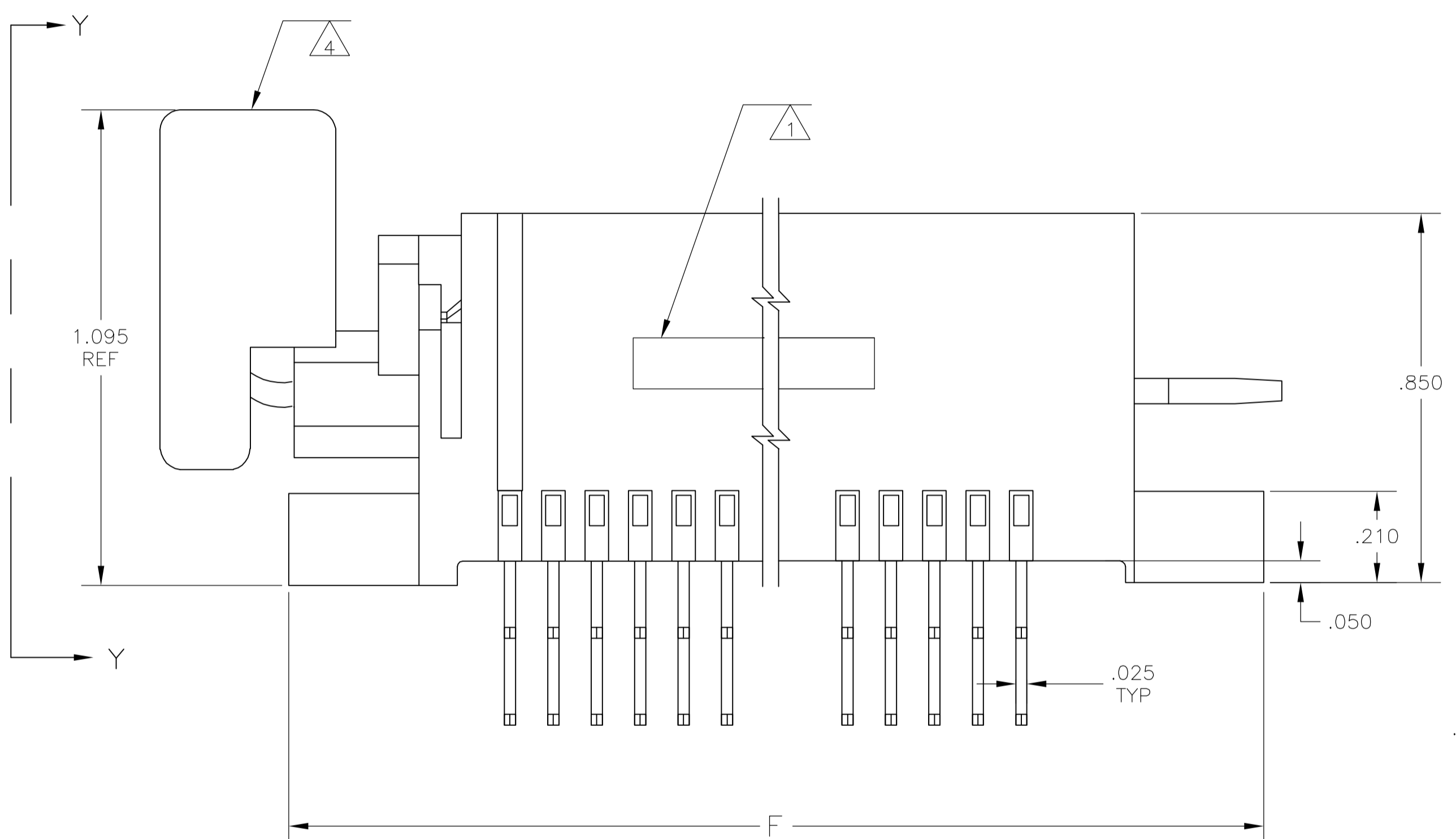
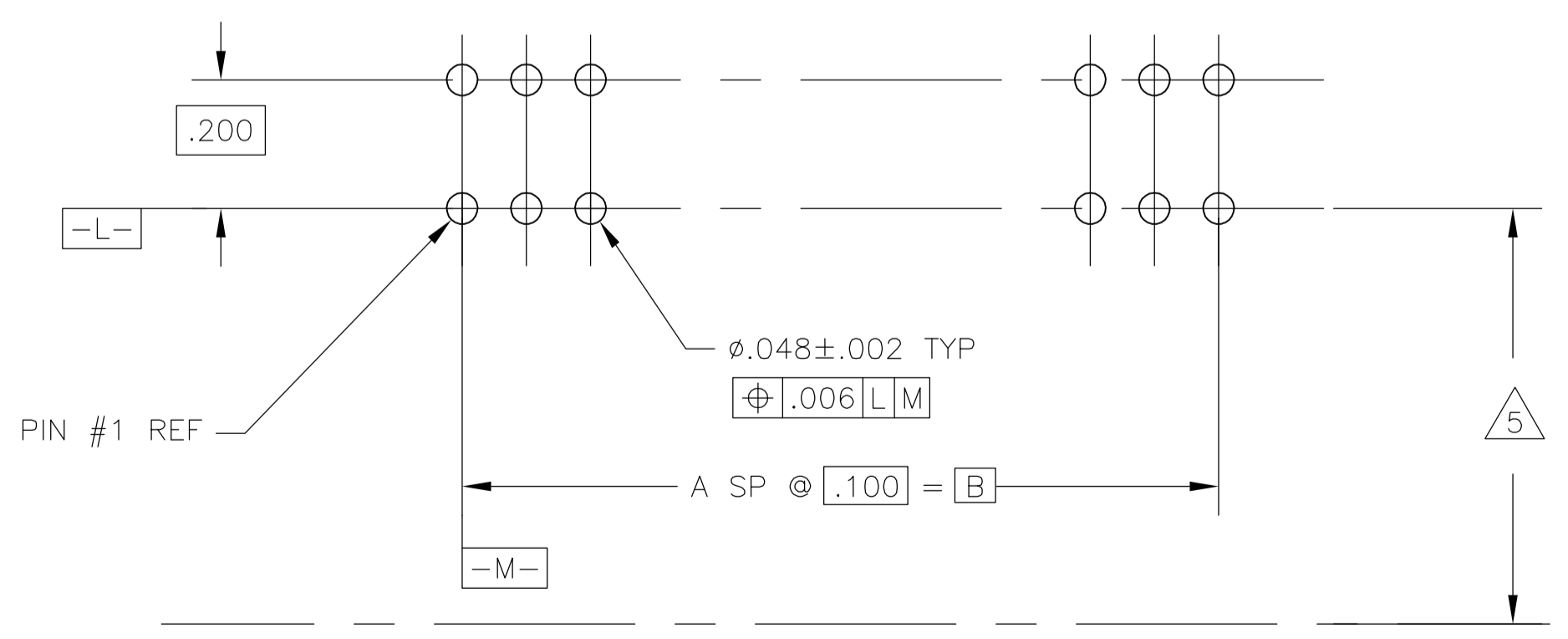


- 1 PART NUMBER AND DATE CODE STAMPED IN THIS AREA ON EITHER SIDE.
- 2 CONTACT: COPPER ALLOY
HOUSING: GLASS FILLED POLYESTER 94 VO
COLOR-BLACK
CAM ROD: STAINLESS STEEL
BOARD LOCK: GLASS FILLED POLYESTER 94 VO
COLOR-YELLOW
- 3 CONTACT: .000050 MIN NICKEL ALL OVER
.000030 GOLD SELECTIVE PLATED IN CONTACT
AREA TIN PLATED POST
- 4 CAM ROD AND BOARD LOCK SHIPPED WITH EACH CONNECTOR. ROTATE IN DIRECTION OF ARROW TO OPEN.
- 5 TO ASSURE PROPER CAM ORIENTATION THIS DIMENSION TO BE .400 MAX. FROM EDGE OF BOARD FOR LEFT BEND VERSION ONLY
- 6 CONTACT: .000050 MIN NICKEL ALL OVER
.000030 GOLD SELECTIVE PLATED IN CONTACT
AREA MATTE TIN PLATED POST



SECTION X-X
 LEFT BEND
 531396-1 THRU
 1-531396-0,
 5-531396-4 &
 6-531396-8

SECTION X-X
 RIGHT BEND
 531396-1 THRU
 1-531396-0,
 5-531396-4 &
 6-531396-0



RECOMMENDED P.C. BOARD LAYOUT

6	5.100	5.900	5.600	5.300	4.900	49	50/100	6-531396-8
6	6.600	7.400	7.100	6.800	6.400	64	65/130	6-531396-0
6	3.700	4.500	4.200	3.900	3.500	35	36/72	5-531396-4
OBSOLETE	6.600	7.400	7.100	6.800	6.400	64	65/130	2-531396-0
OBSOLETE	6.100	6.900	6.600	6.300	5.900	59	60/120	1-531396-9
	5.100	5.900	5.600	5.300	4.900	49	50/100	1-531396-8
OBSOLETE	4.400	5.200	4.900	4.600	4.200	42	43/86	1-531396-7
OBSOLETE	4.100	4.900	4.600	4.300	3.900	39	40/80	1-531396-5
OBSOLETE	3.700	4.500	4.200	3.900	3.500	35	36/72	1-531396-4
OBSOLETE	2.300	3.100	2.800	2.500	2.100	21	22/44	1-531396-1
	6.600	7.400	7.100	6.800	6.400	64	65/130	1-531396-0
OBSOLETE	5.100	5.900	5.600	5.300	4.900	49	50/100	531396-8
OBSOLETE	4.100	4.900	4.600	4.300	3.900	39	40/80	531396-5
	3.700	4.500	4.200	3.900	3.500	35	36/72	531396-4
OBSOLETE	2.300	3.100	2.800	2.500	2.100	21	22/44	531396-1
	H	F	E	C	B	A	POSITION	PART NO

THIS DRAWING IS A CONTROLLED DOCUMENT.

DIMENSIONS: INCHES	TOLERANCES UNLESS OTHERWISE SPECIFIED:	0 PLC ± -	1 PLC ± .020	2 PLC ± .020	3 PLC ± .010	4 PLC ± -	ANGLES ± -
MATERIAL	FINISH	2	3	6	CUSTOMER DRAWING		

DW	L WAREHAM	MAY88	Tyco Electronics Corporation Harrisburg, Pa 17105-3608
CHK	D GORNEC	MAY88	
APVD	D GORNEC	MAY88	NAME
PRODUCT SPEC	ROTARY ZIF ASSEMBLY .100 x .200, RIGHT ANGLE OPEN ONE END		
APPLICATION SPEC	SIZE	CAGE CODE	DRAWING NO
WEIGHT	A1	00779	531396
SCALE	4:1	SHEET	1 OF 1